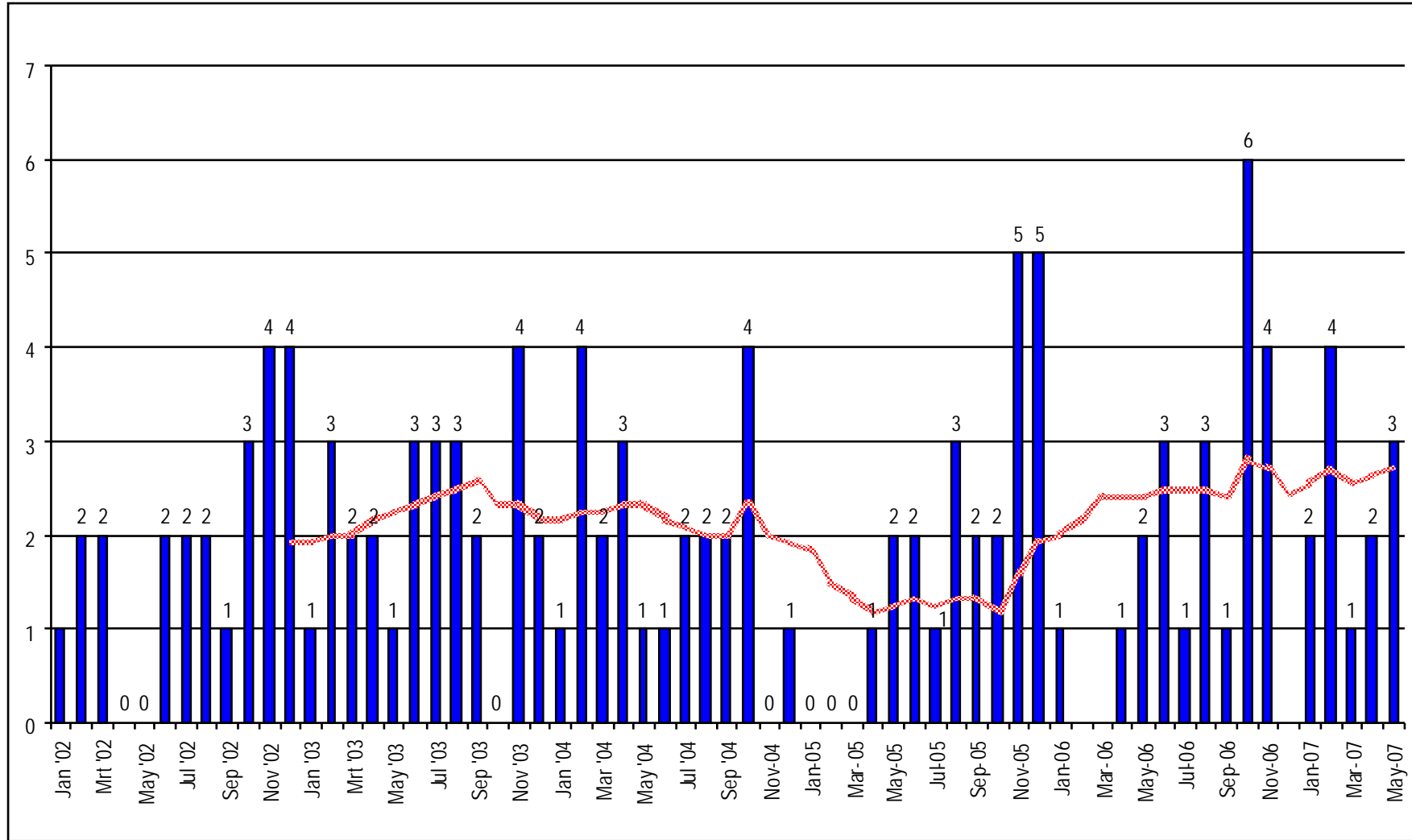
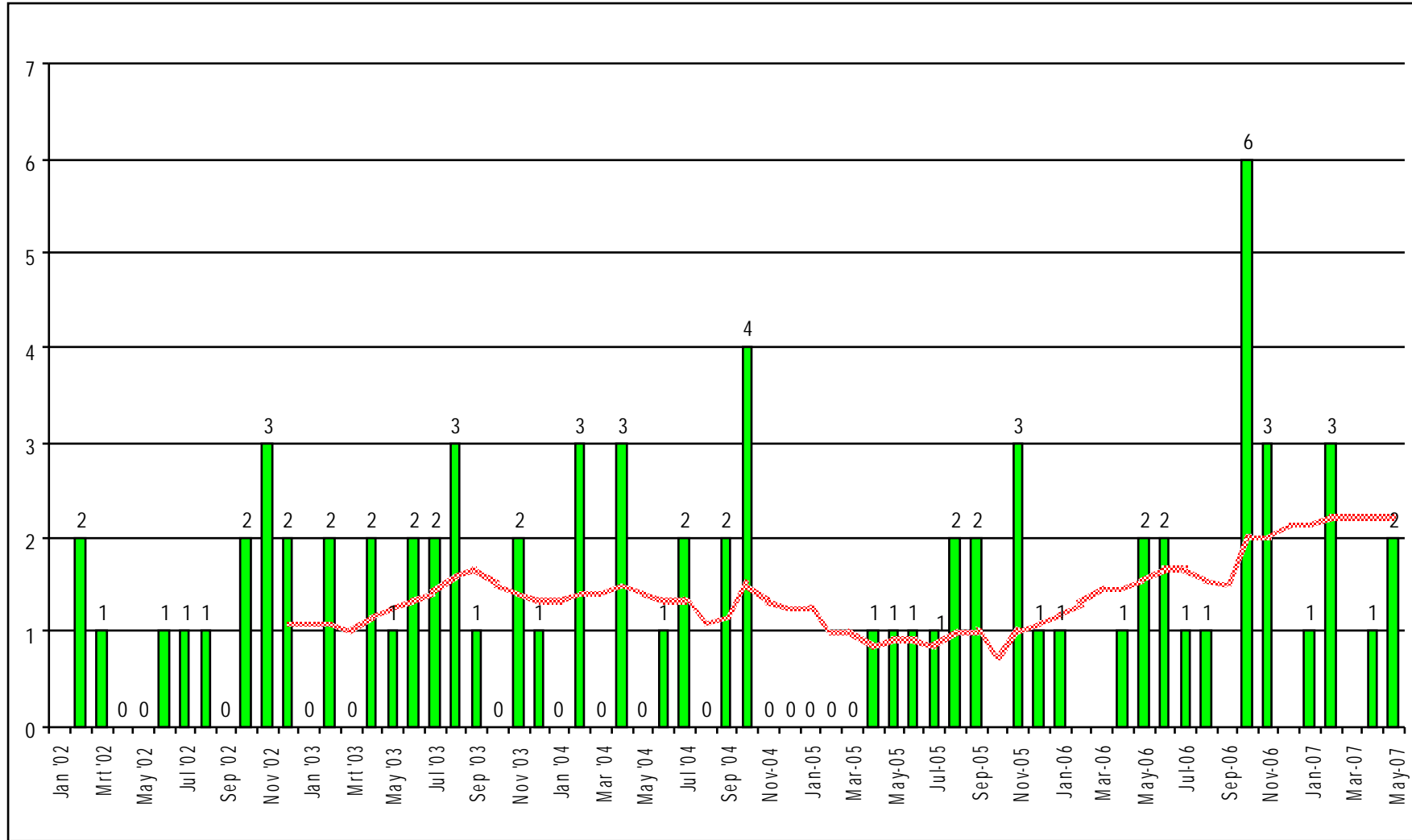


# TOTAL FATALITIES ACCIDENTS PER MONTH

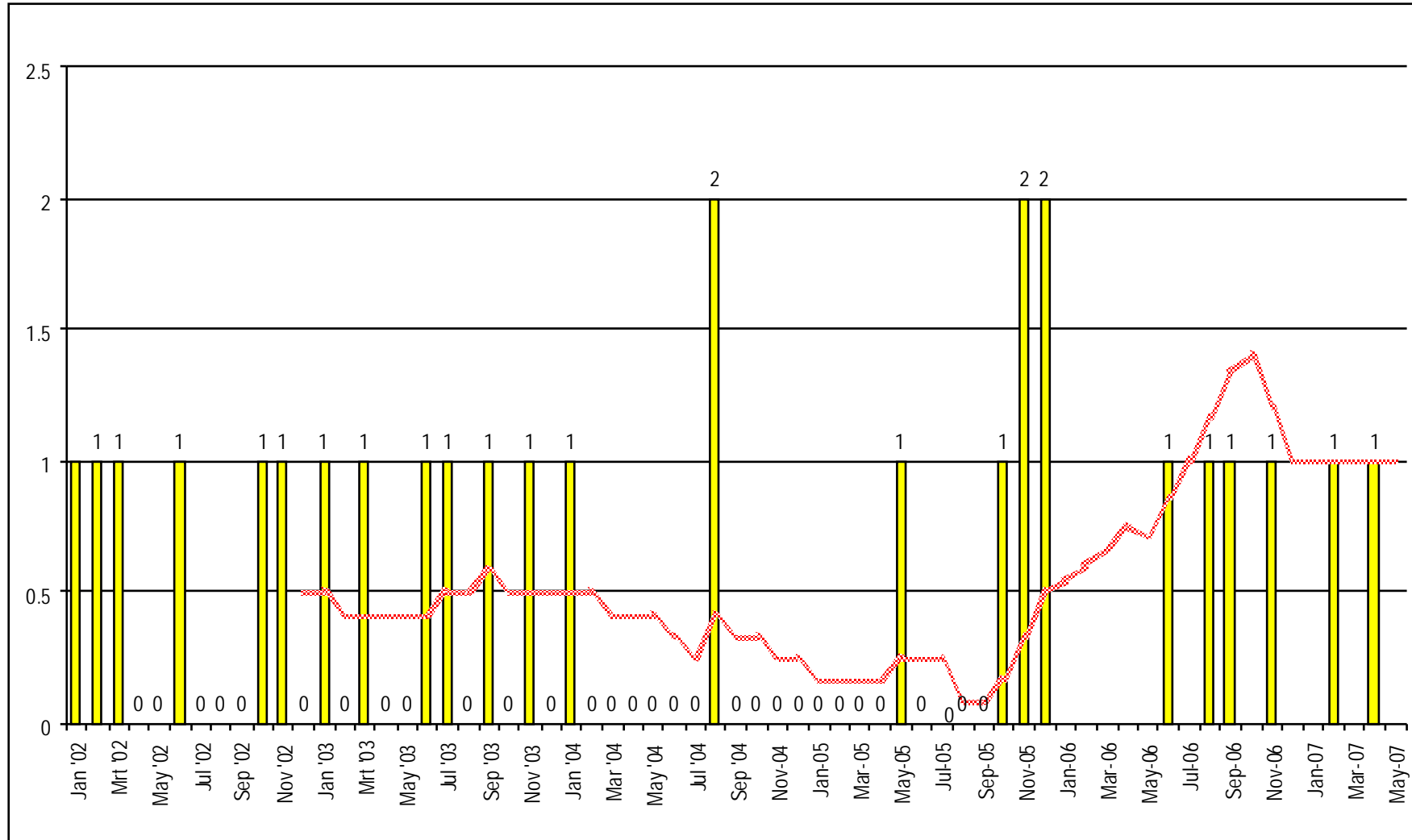
## JAN 2002 – MAY 2007



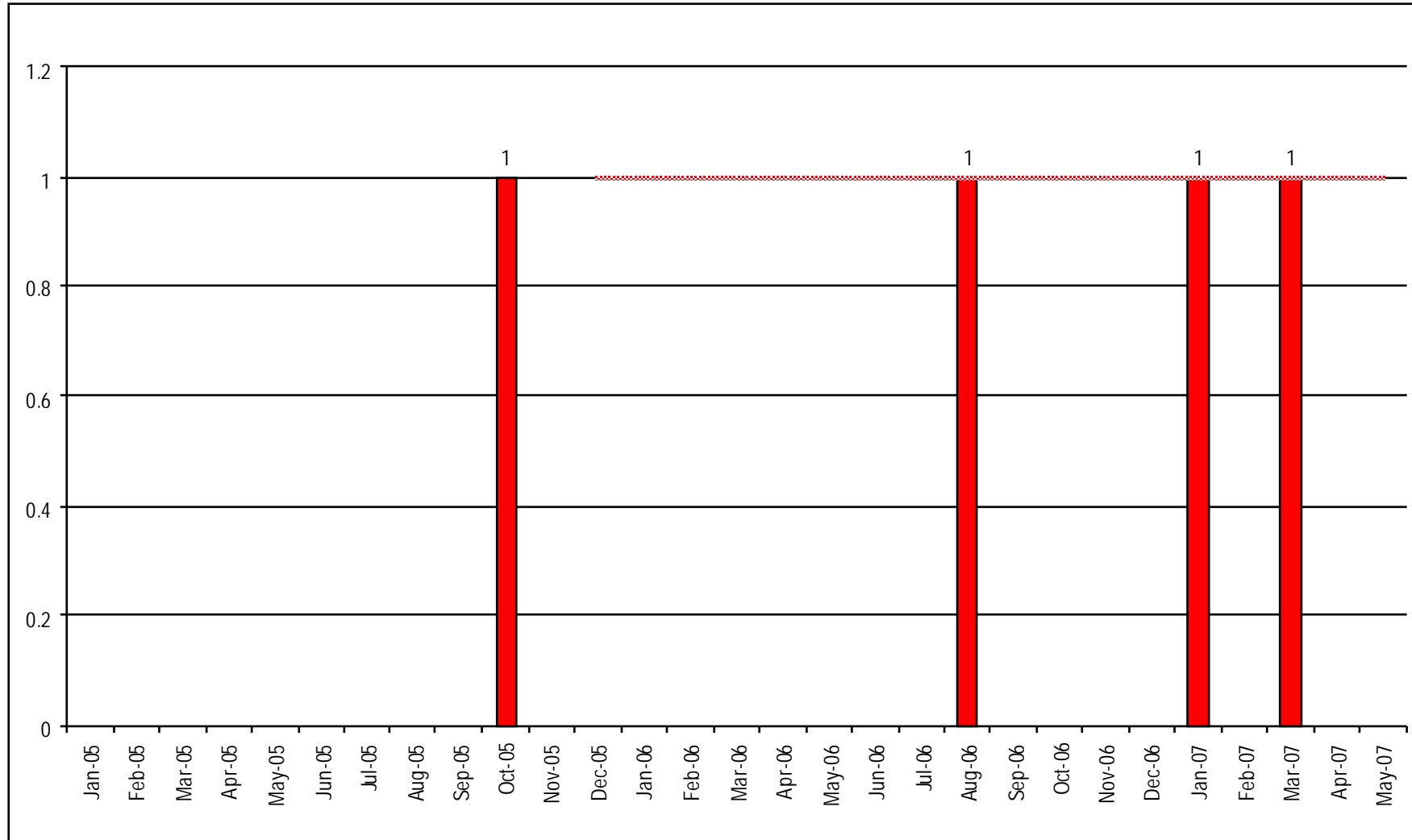
TOTAL FATALITIES ACCIDENTS PER MONTH  
 COAL MINES  
 JAN 2002 – MAY 2007



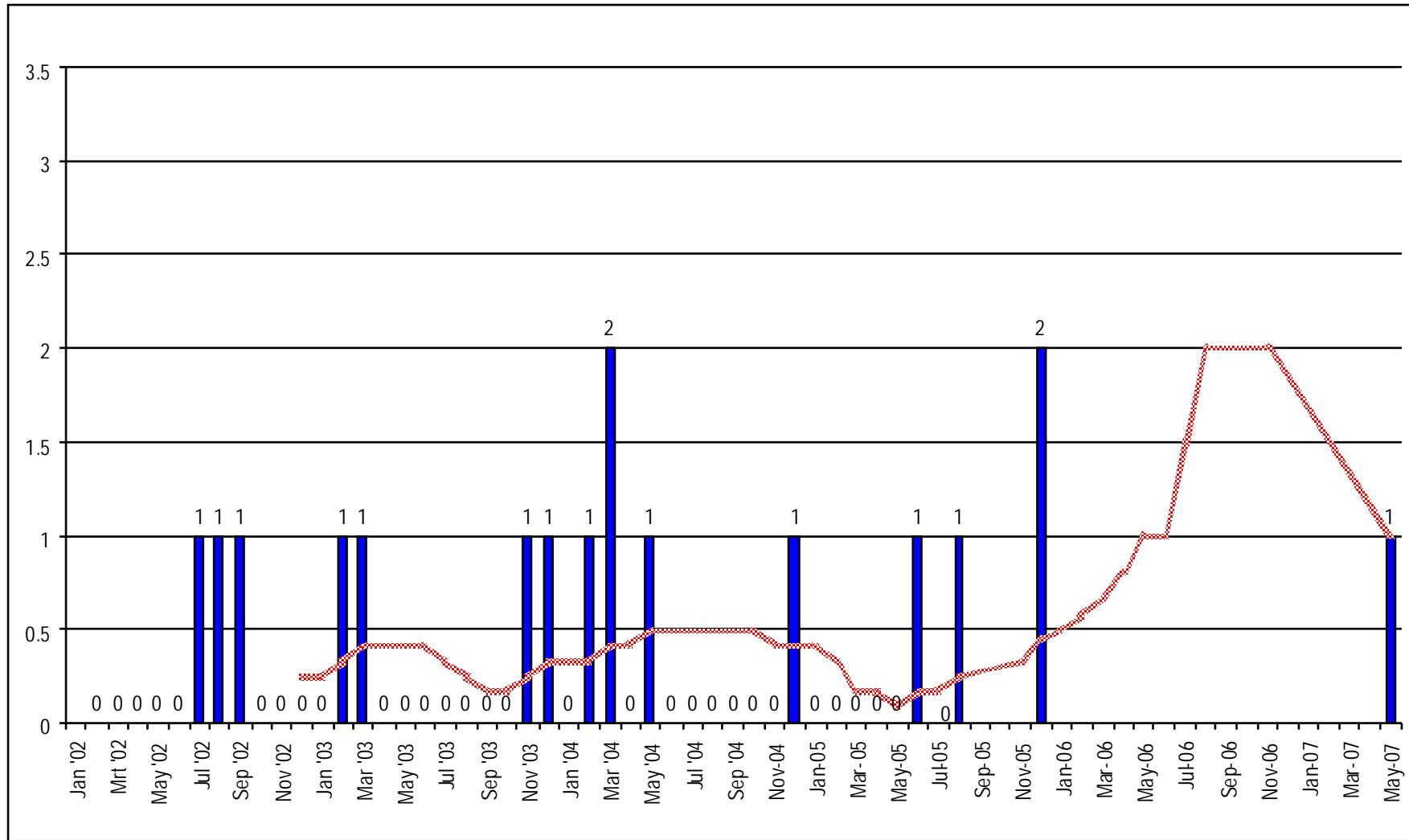
TOTAL FATALITIES ACCIDENTS PER MONTH  
 GOLD MINES  
 JAN 2002 – MAY 2007



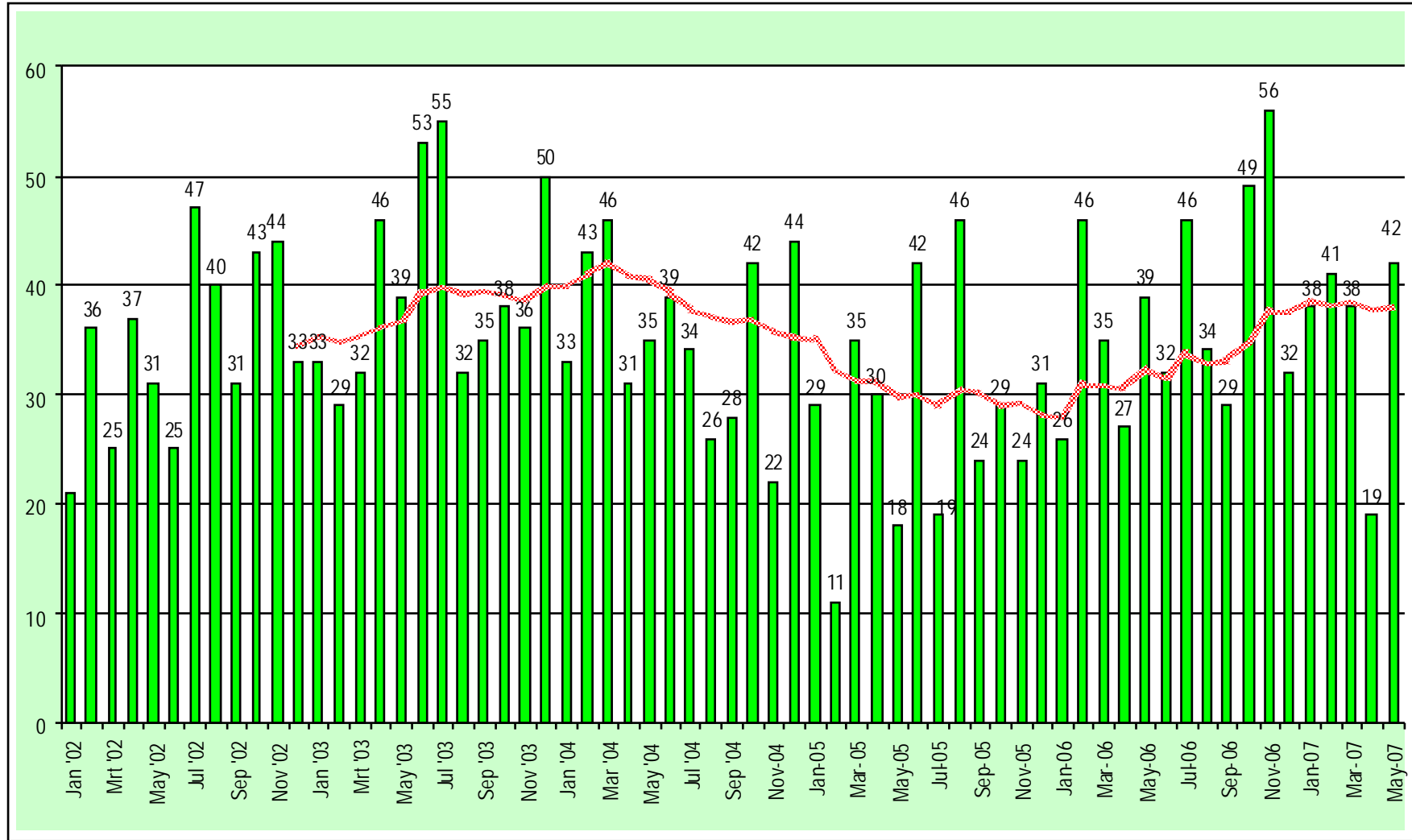
TOTAL FATALITIES ACCIDENTS PER MONTH  
PLATINUM MINES  
JAN 2005 – MAY 2007



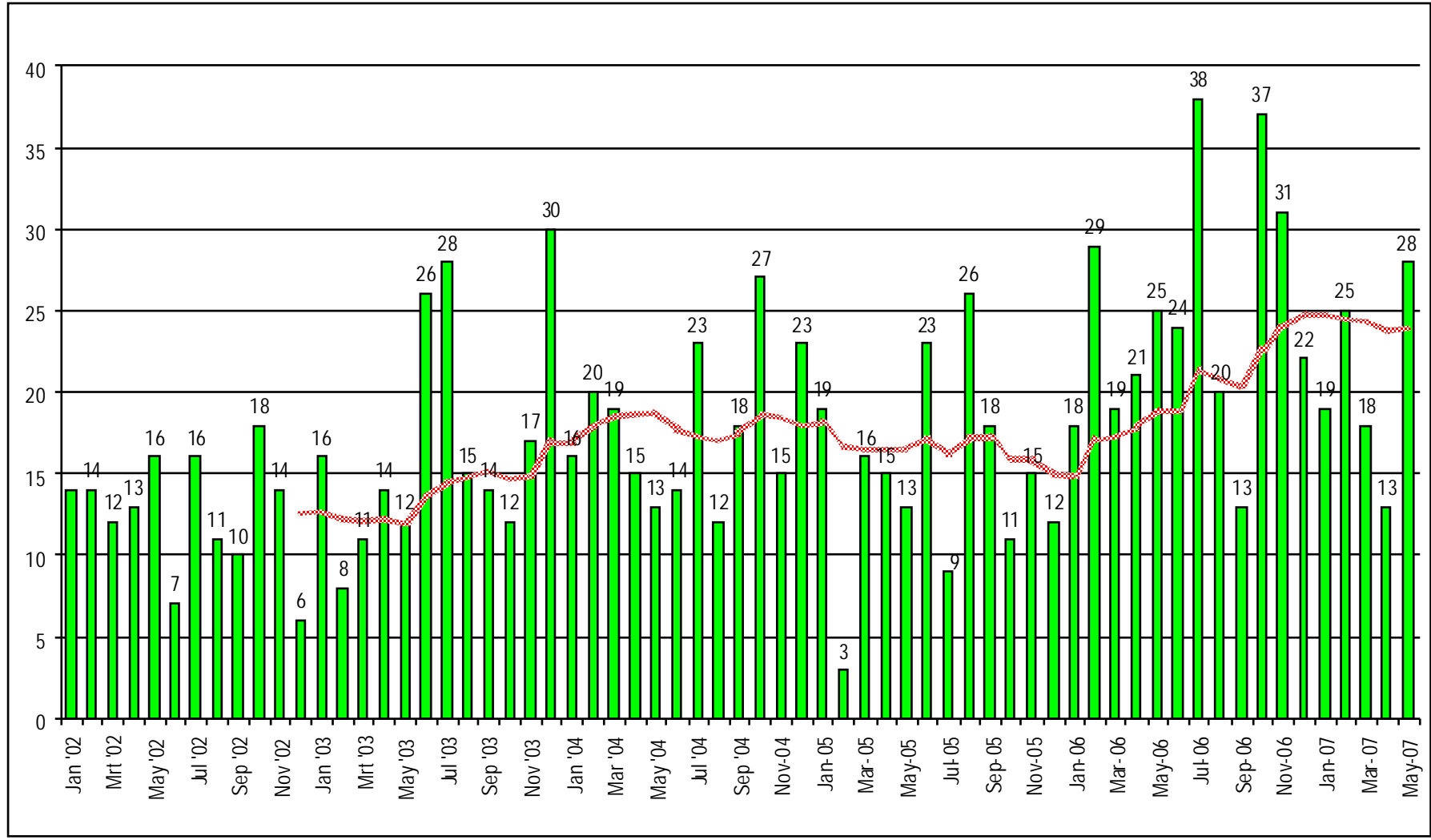
TOTAL FATALITIES ACCIDENTS PER MONTH  
OTHER MINES  
JAN 2002 – MAY 2007



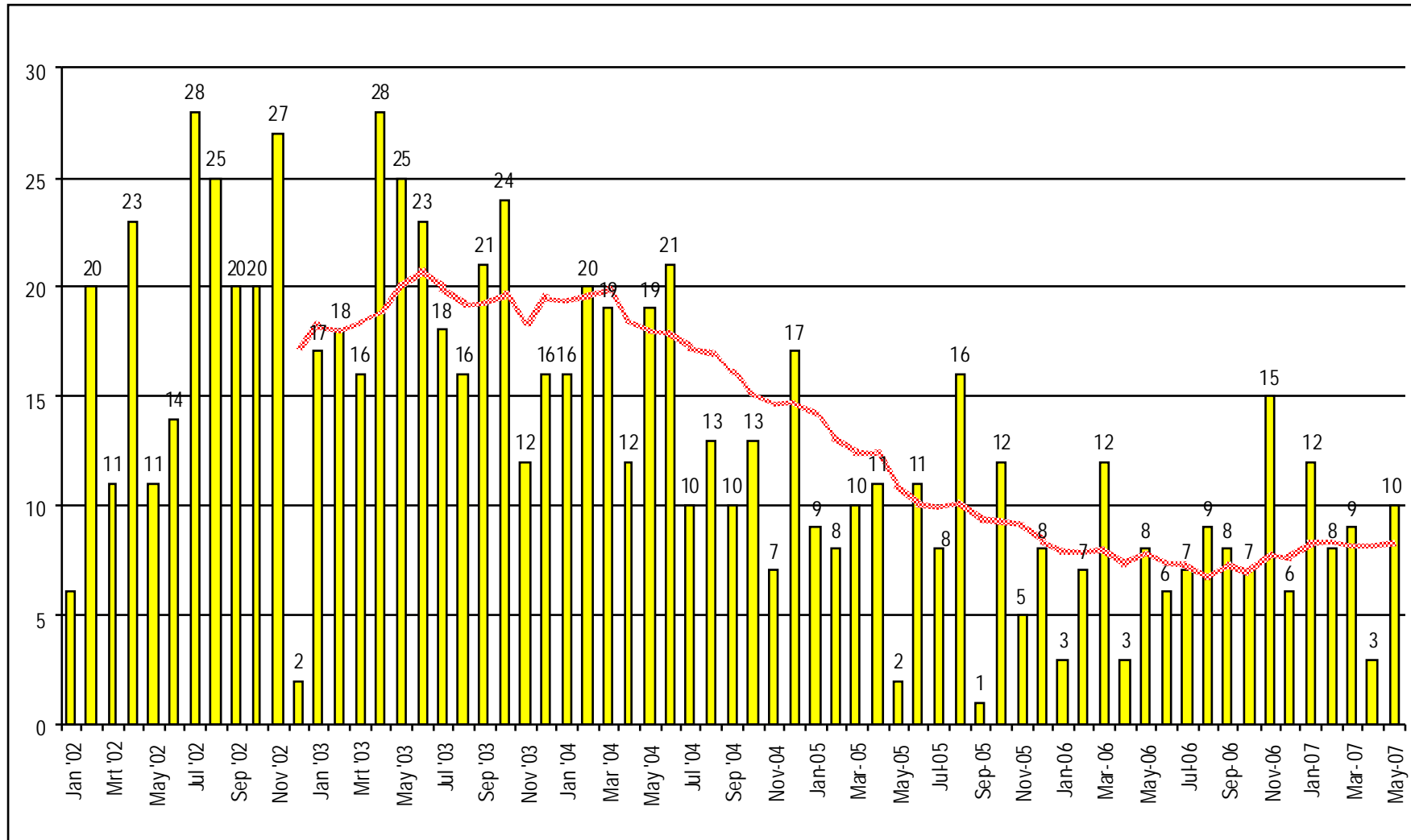
# TOTAL ACCIDENTS PER MONTH JAN 2002 – MAY 2007



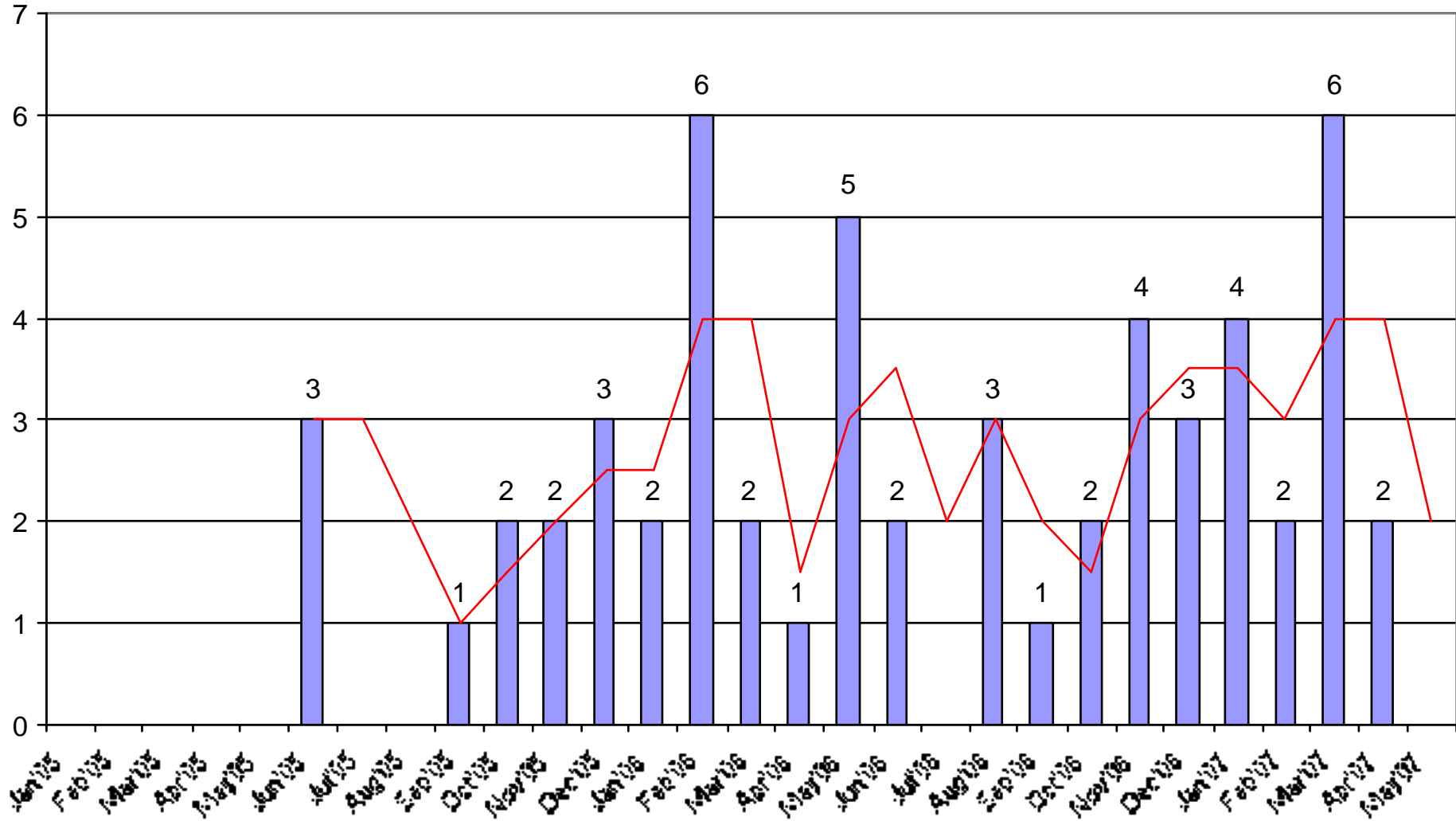
TOTAL ACCIDENTS PER MONTH  
 COAL MINES  
 JAN 2002 – MAY 2007



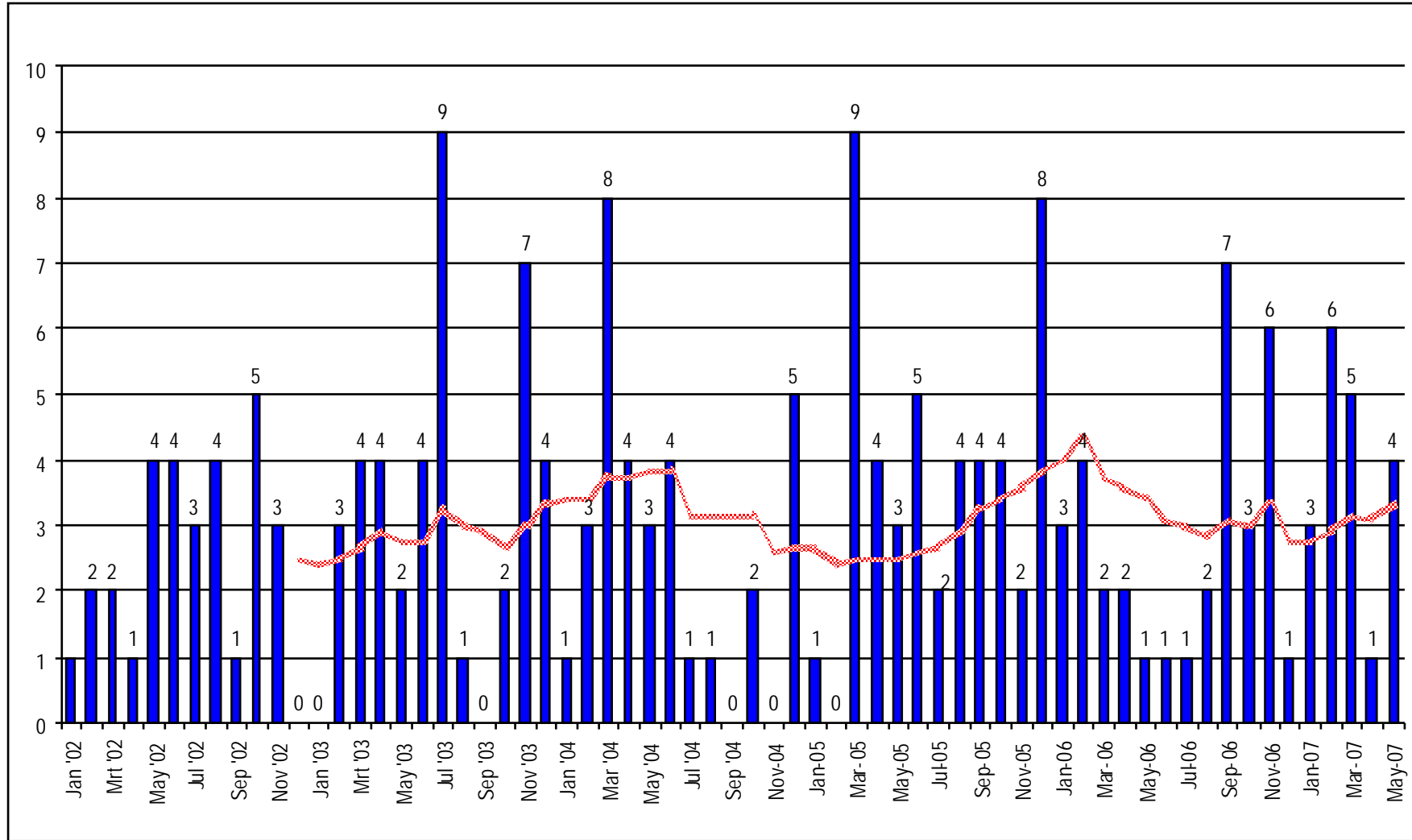
# TOTAL ACCIDENTS PER MONTH GOLD MINES JAN 2002 – MAY 2007



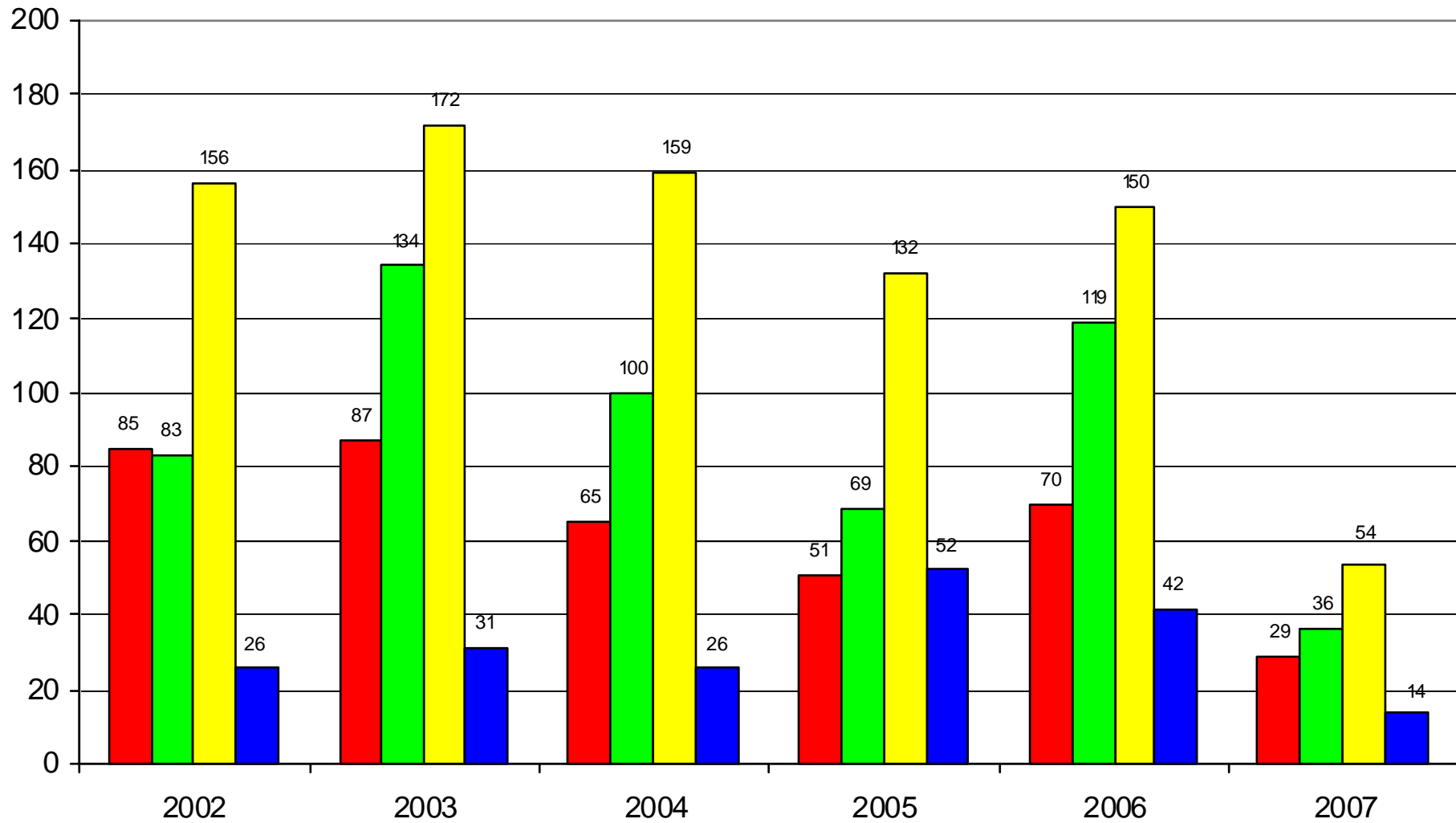
TOTAL ACCIDENTS PER MONTH  
 PLATINUM MINES  
 JAN 2005 - APRIL 2007



TOTAL ACCIDENTS PER MONTH  
OTHER MINES  
JAN 2002 - MAY 2007

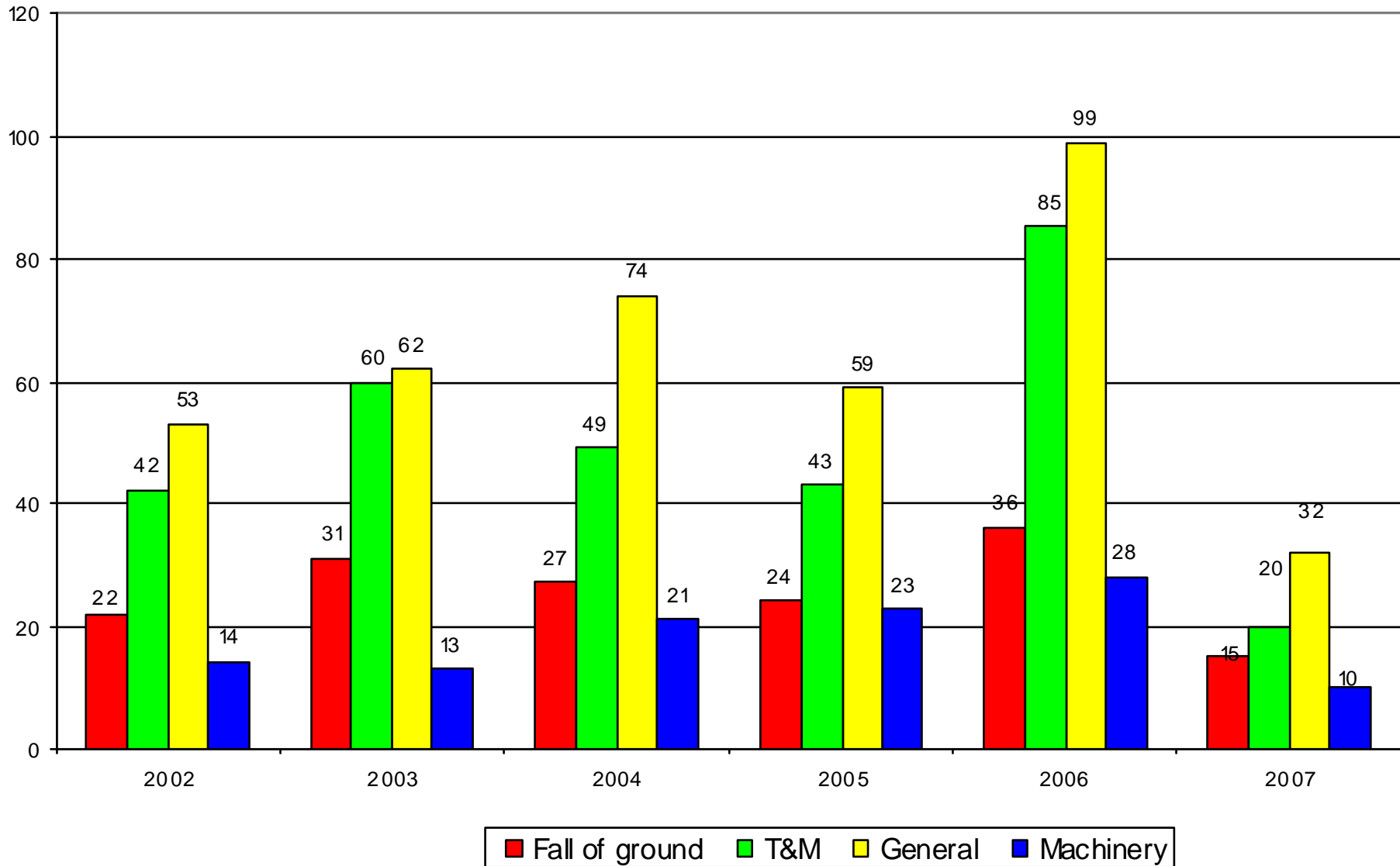


**TOTAL ACCIDENTS PER YEAR PER MAIN CONTRIBUTOR**  
**JAN 2002 - MAY 2007**

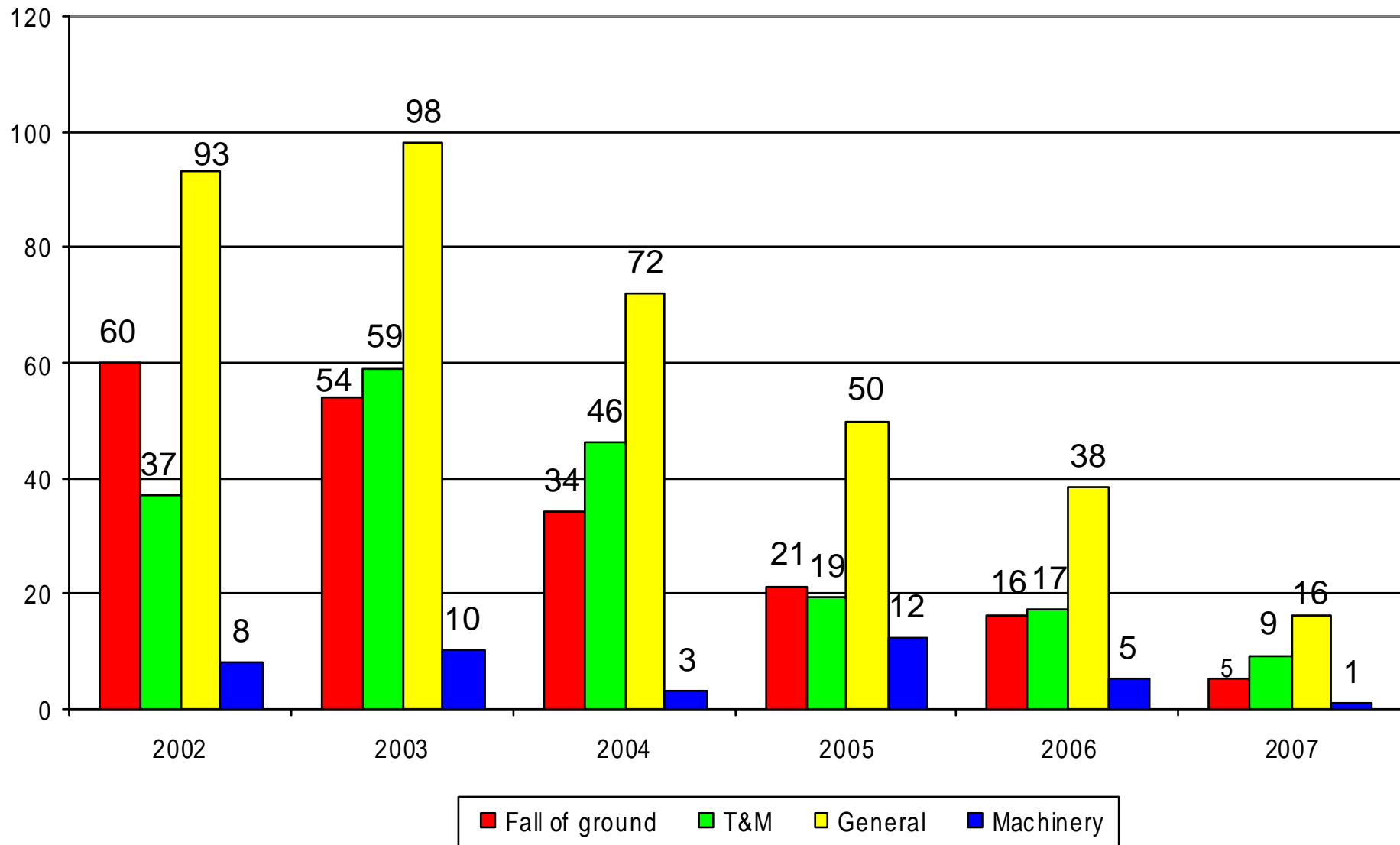


■ Fall of ground   ■ T&M   ■ General   ■ Machinery

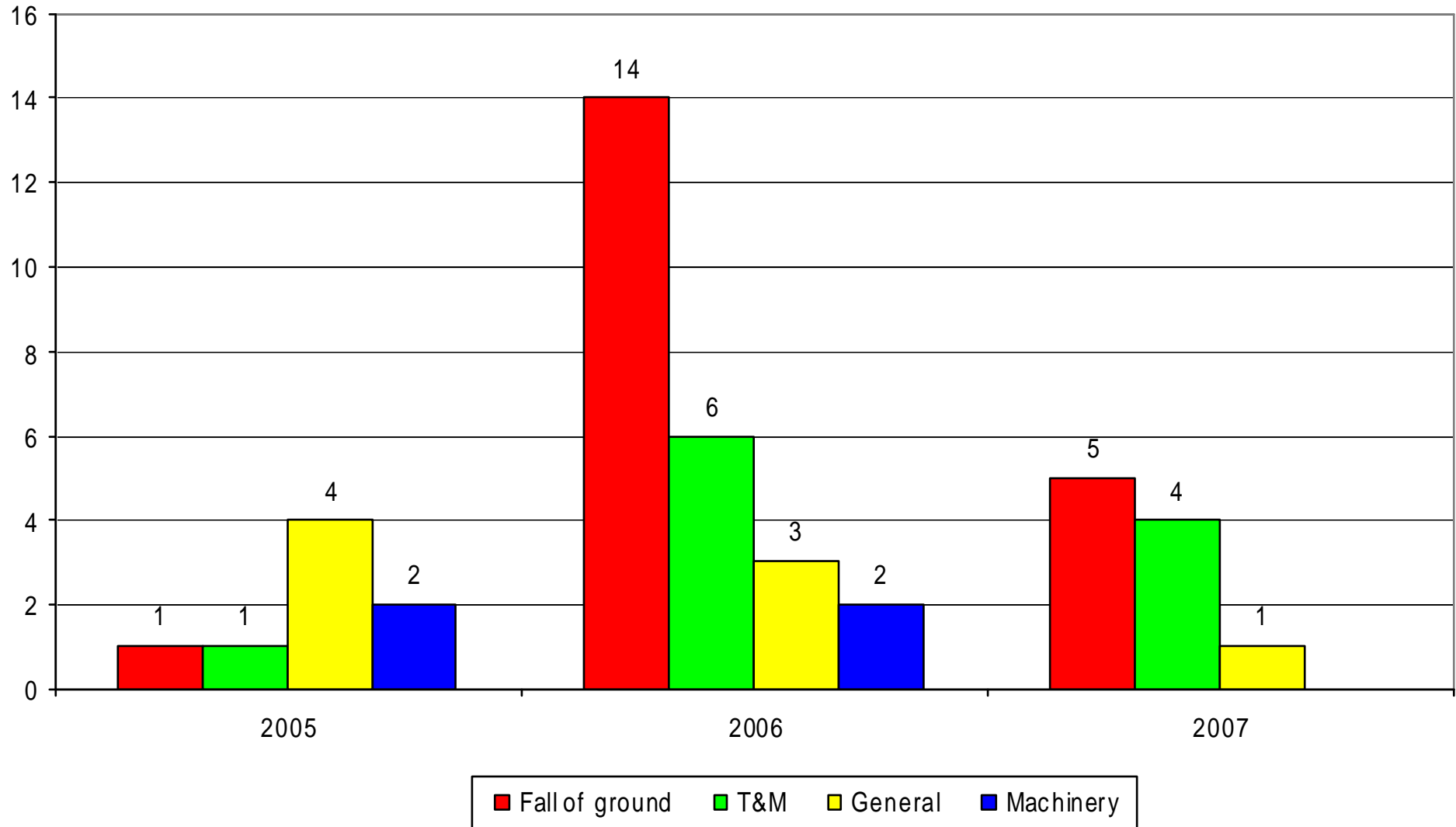
**TOTAL ACCIDENTS PER YEAR PER MAIN CONTRIBUTOR  
COAL MINES  
JAN 2002 - MAY 2007**



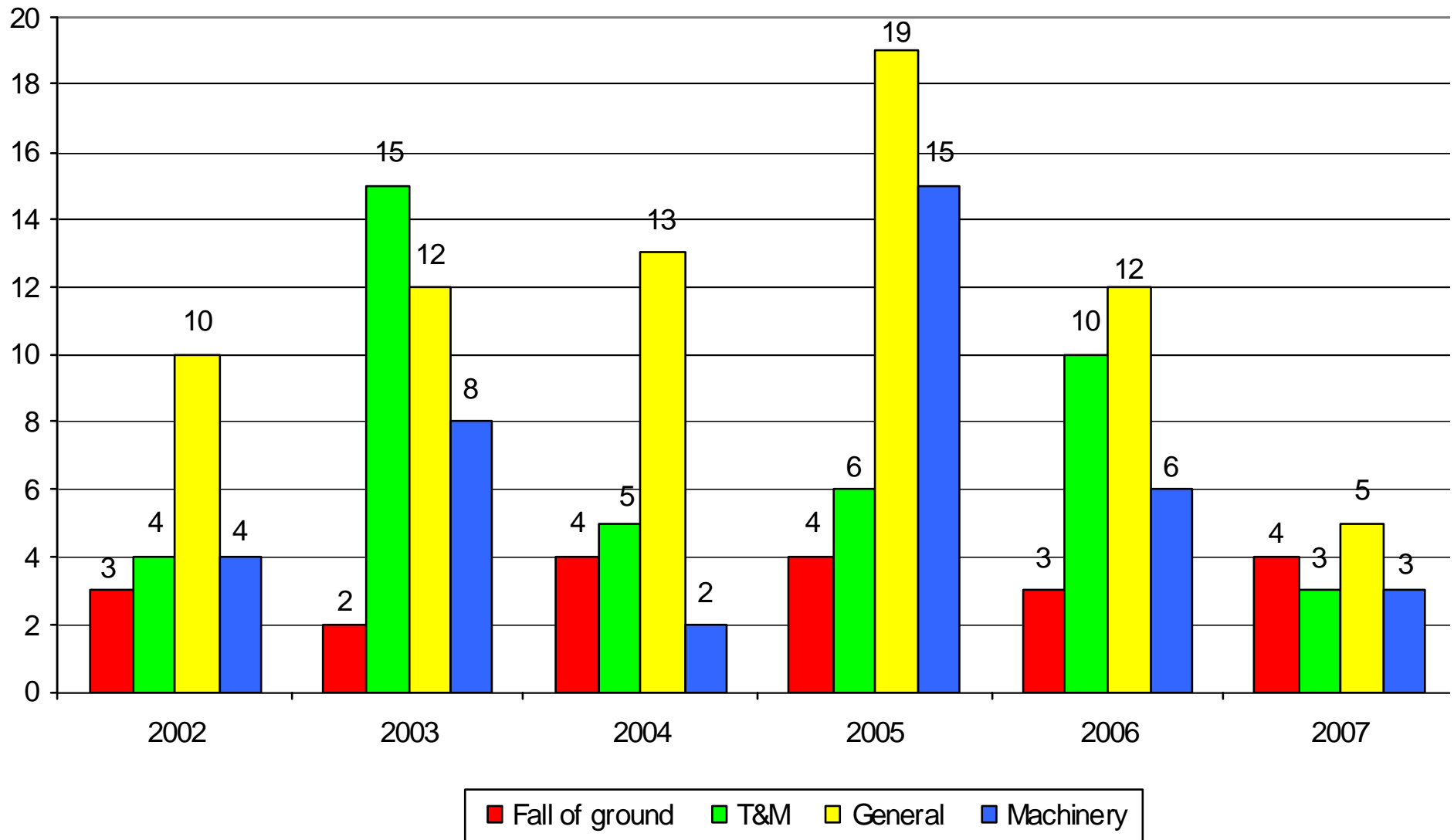
**TOTAL ACCIDENTS PER YEAR PER MAIN CONTRIBUTOR**  
**GOLD MINES**  
**JAN 2002 - MAY 2007**



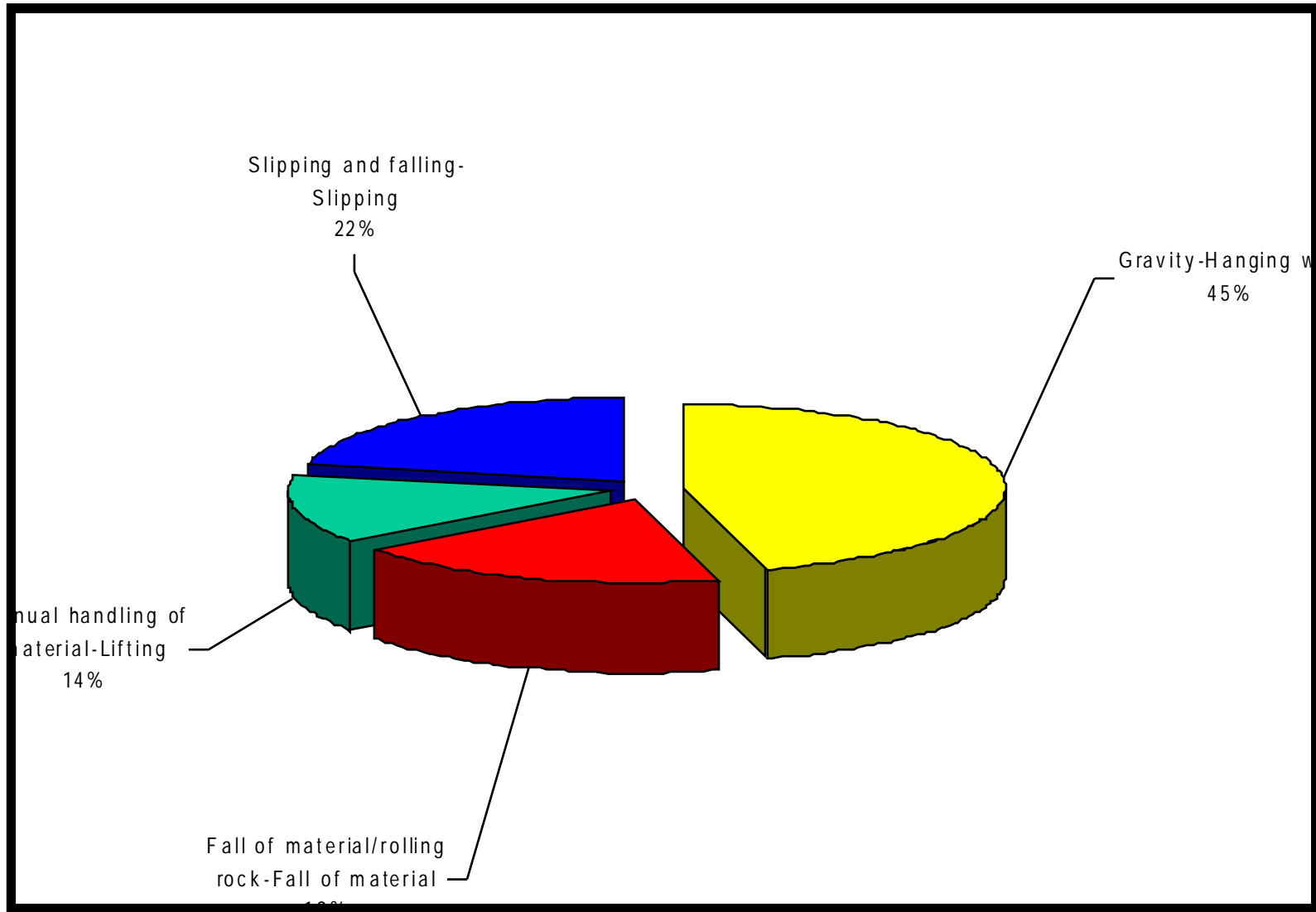
TOTAL ACCIDENTS PER YEAR PER MAIN CONTRIBUTOR  
PLATINUM MINES  
JAN 2005 - MAY 2007



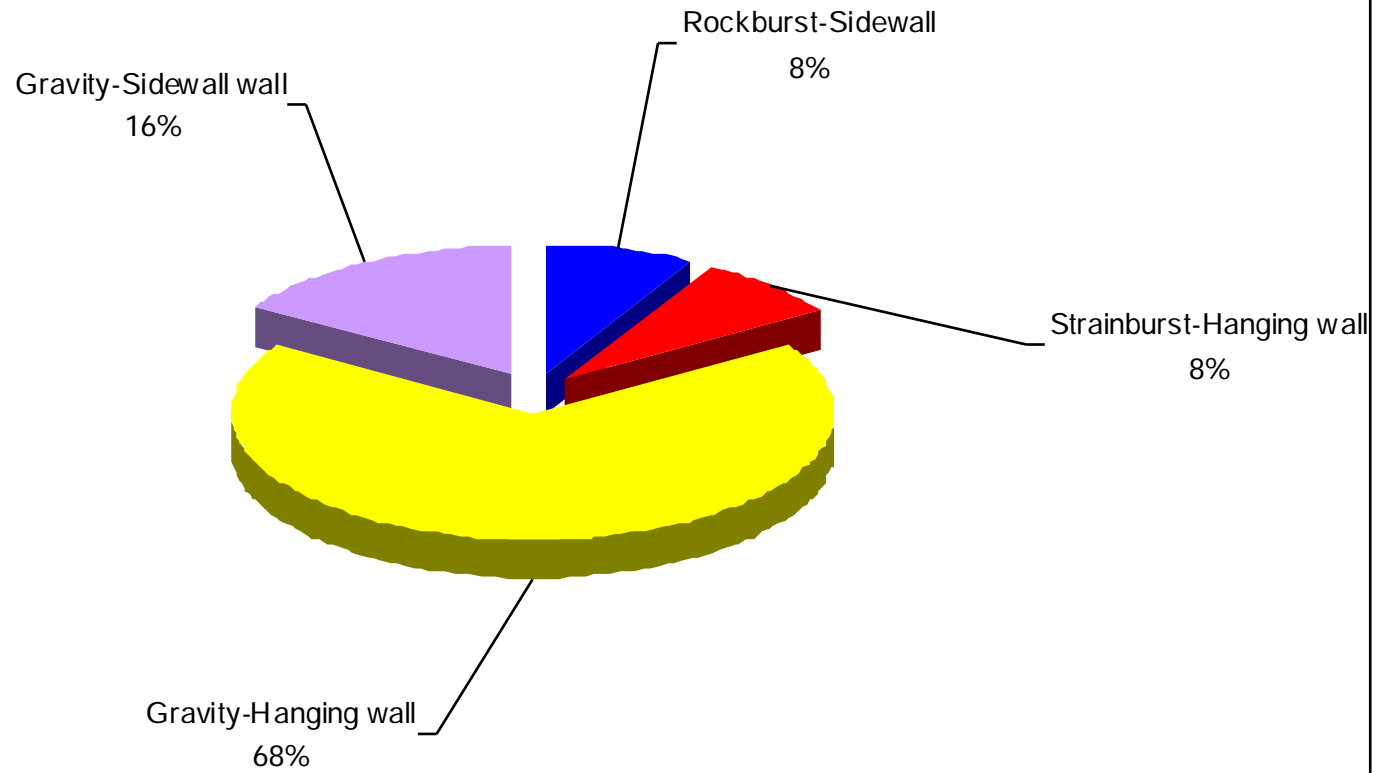
**TOTAL ACCIDENTS PER MONTH  
OTHER MINES  
JAN 2002 - MAY 2007**



DISTRIBUTION OF ACCIDENTS >04  
JAN 2007 - MAY 2007



FALL OF GROUND ACCIDENTS>1  
JAN 2007 – MAY 2007



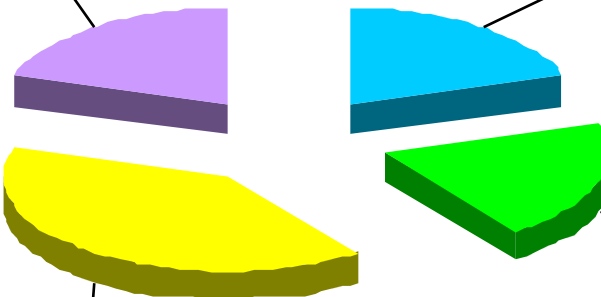
MACHINERY ACCIDENTS >01  
JAN 2007 - MAY 2007

Other machinery not  
included under  
transportation &  
mining -Crushers  
20%

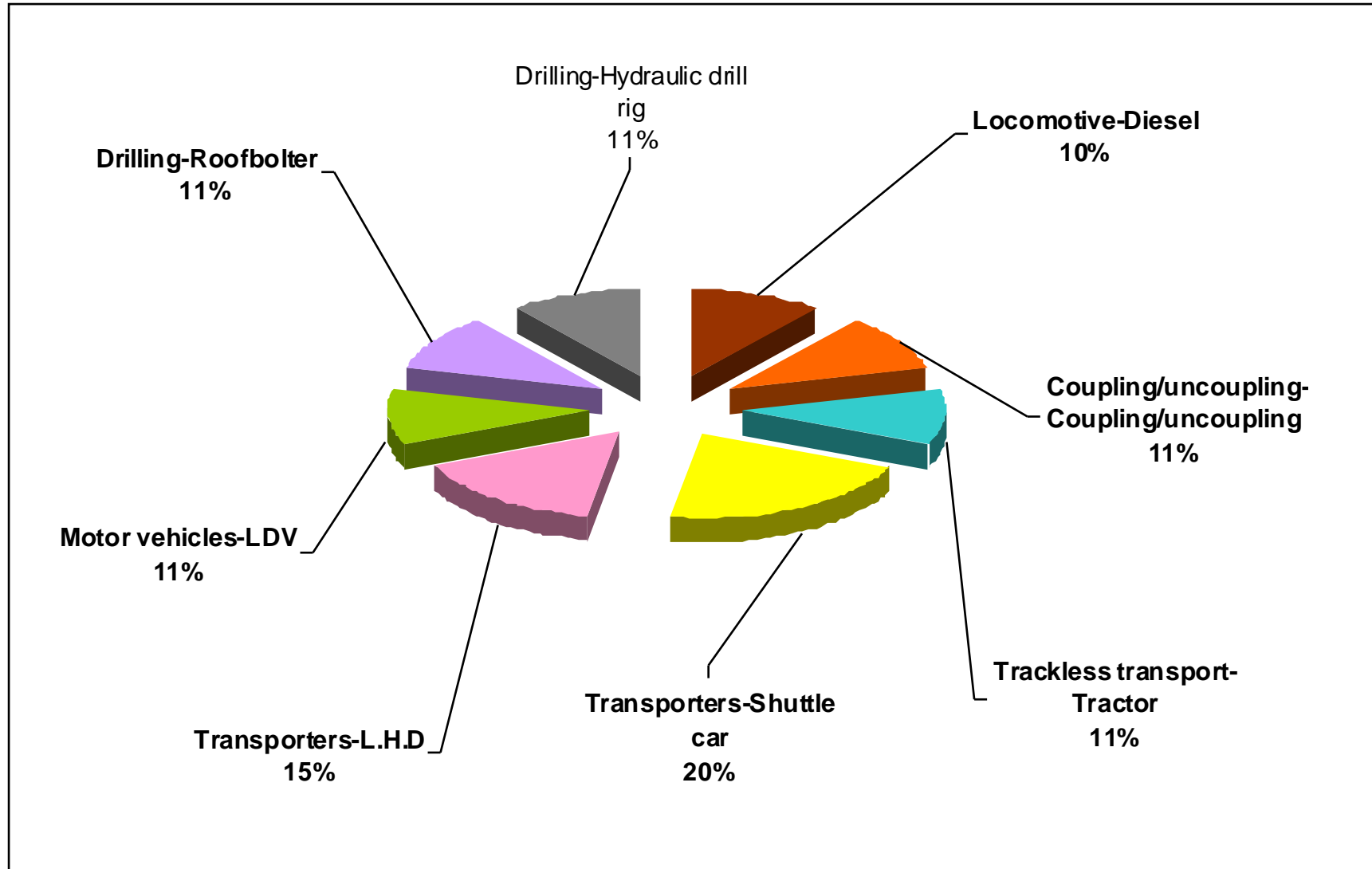
Conveyor belts - Tail  
pulley  
20%

Portable power tools -  
Rock drill  
40%

Portable power tools -  
Coal drill  
20%



TRANSPORT & MINING ACCIDENTS >1  
JAN 2007 – MAY 2007



GENERAL ACCIDENTS >3  
JAN 2007 - MAY 2007

